



Breaking Ground - The Challenges and Rewards of International Partnerships

E B O O K



Table of Contents

03

● The Benefits of International Partnerships

- Economic advantages
- Knowledge and innovation exchange
- Cultural and social enrichment

07

● Challenges in International Partnerships

- Communication barriers
- Legal and regulatory complexities
- Risk management and conflict resolution

11

● Strategies for Successful International Partnerships

- Preparing for Partnership
- Building trust and relationships
- Effective collaboration and teamwork
- Adapting to cultural differences

16

● The Bottom Line

01 Introduction

International partnerships have become a cornerstone of global collaboration in today's interconnected world. But what exactly do we mean by "international partnerships"? Simply put, international partnerships refer to cooperative endeavors between individuals, organizations, or nations from different countries. These partnerships are based on shared objectives, mutual benefits, and a desire to combine resources, knowledge, and expertise to achieve common goals.

Consider the economic advantages that international partnerships bring. They open doors to new markets, allowing businesses to expand their reach and tap into previously untapped customer bases. Organizations can leverage diverse skill sets, knowledge, and resources by **collaborating with partners from different countries**, increasing productivity and competitiveness.

So, whether you are a business leader seeking to expand into new markets, a researcher looking to collaborate on groundbreaking discoveries, or an individual passionate about fostering global connections, this eBook will guide you to the challenges and rewards of international partnerships. Together, let us embark on this enlightening journey toward successful collaboration across borders.

02 The Benefits of International Partnerships

• Economic advantages

When Microsoft partners with the construction industry internationally, numerous economic advantages emerge. One significant benefit is gaining access to new markets.

The construction industry is diverse, with projects taking place around the world. Microsoft can expand its reach and tap into previously untapped markets by forming partnerships with construction companies in different countries.



Moreover, international partnerships with the construction industry increase trade and investment opportunities. Construction projects often involve significant investments, and Microsoft partners can seize these opportunities by **collaborating with construction companies** globally.

Furthermore, international partnerships enable cost-sharing and risk reduction. Construction projects often entail substantial financial risks, such as delays, budget overruns, and unforeseen challenges.

Microsoft partners can distribute these risks by partnering with construction companies in different countries, sharing the financial burden and minimizing potential losses. This safeguards Microsoft's investments and allows construction partners to leverage Microsoft's expertise and resources, resulting in cost savings and improved project outcomes.

- Knowledge and innovation exchange



When Microsoft partners with the construction industry internationally, knowledge and innovation exchange become integral to the collaboration. One key benefit is collaborative research and development (R&D).

By working hand in hand, Microsoft and its construction partners can pool their resources, expertise, and research capabilities to tackle industry challenges and develop innovative solutions. This collaborative R&D approach enables the exploration of new technologies, materials, and methodologies that enhance construction processes, productivity, and sustainability.

International partnerships also facilitate the sharing of best practices and expertise. With its technological prowess, [Microsoft partners](#) can bring cutting-edge digital tools and solutions to the construction industry.

Through collaboration, construction partners can learn from Microsoft's expertise in cloud computing, data analytics, artificial intelligence, and augmented reality. Moreover, international partnerships between Microsoft partners and the construction industry drive enhanced technological advancements.

Microsoft's innovation ecosystem provides access to many technology resources, including software platforms, development tools, and data analytics capabilities. By leveraging these resources, construction partners can adopt and integrate digital technologies that enhance their project management, communication, and collaboration processes.

• Cultural and social enrichment

Partnerships between **Microsoft partners** and the construction industry on an international scale not only bring economic and technological benefits but also foster cultural and social enrichment. Through collaboration, Microsoft and its construction partners promote cross-cultural understanding.

The construction industry operates within diverse cultural contexts, and international partnerships provide opportunities to bridge cultural gaps, appreciate different perspectives, and cultivate cultural intelligence. This mutual understanding enhances communication, minimizes misunderstandings, and promotes harmonious working relationships.

International partnerships also contribute to building relationships and fostering goodwill. By collaborating with construction companies worldwide, Microsoft establishes strong connections within the industry.

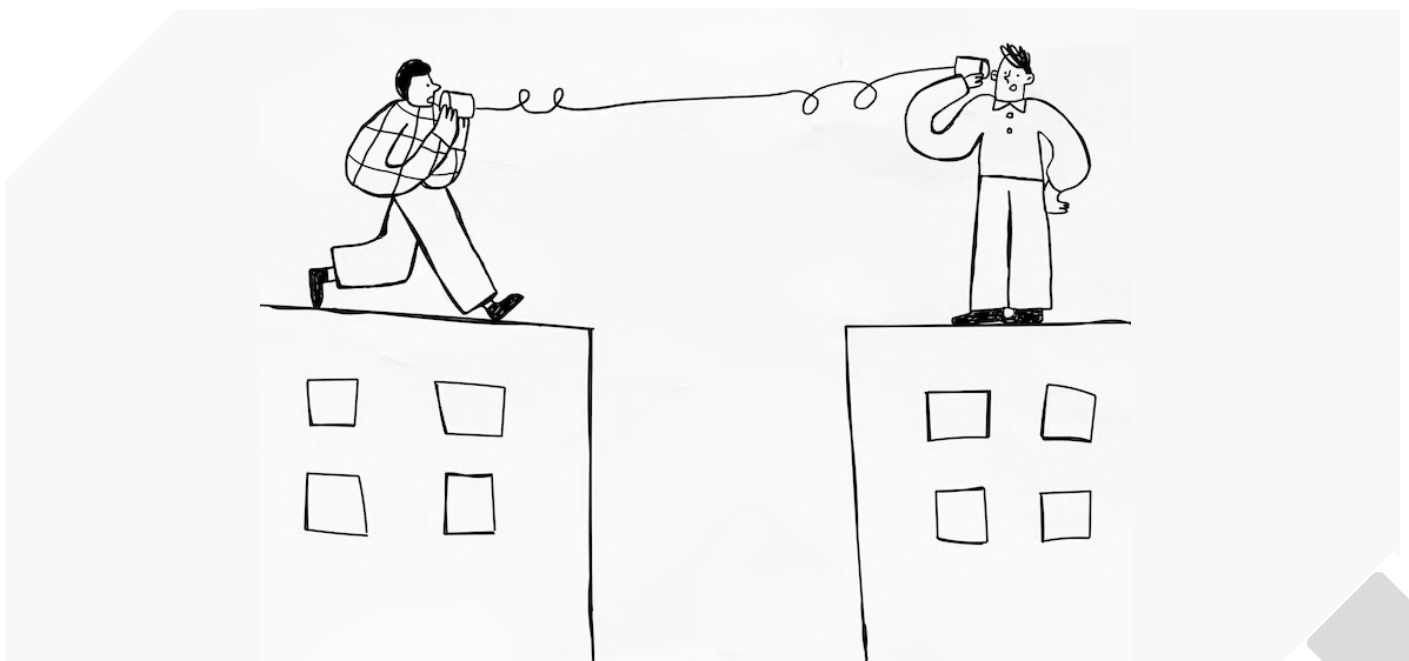
These relationships go beyond business transactions and evolve into long-term partnerships built on trust, shared values, and common goals. Such partnerships strengthen the construction industry's social fabric, fostering camaraderie, collaboration, and mutual support.

Furthermore, international partnerships provide an avenue for experiencing diversity and learning from different perspectives. Microsoft's collaboration with construction companies from various countries exposes its teams to different cultural practices, work styles, and approaches to problem-solving. The cultural exchange within these partnerships enriches the teams involved and promotes a global mindset, enhancing their ability to address complex challenges in the construction industry.

By partnering with the construction industry internationally, Microsoft reaps the economic benefits of accessing new markets, increasing trade opportunities, and sharing costs and risks. Simultaneously, it engages in knowledge and innovation exchange, facilitating collaborative R&D, sharing best practices, and driving technological advancements.

03 Challenges in International Partnerships

- **Communication barriers**



When Microsoft partners with the construction industry internationally, various communication barriers may arise, hindering effective collaboration.

One common challenge is **language and translation issues**. Construction projects involve intricate technical details and complex documentation, and when different languages are involved, misinterpretations can occur, leading to misunderstandings and errors. Microsoft and its construction partners must overcome this challenge by ensuring clear and precise communication, utilizing professional translation services when necessary, and establishing common terminology for seamless understanding.

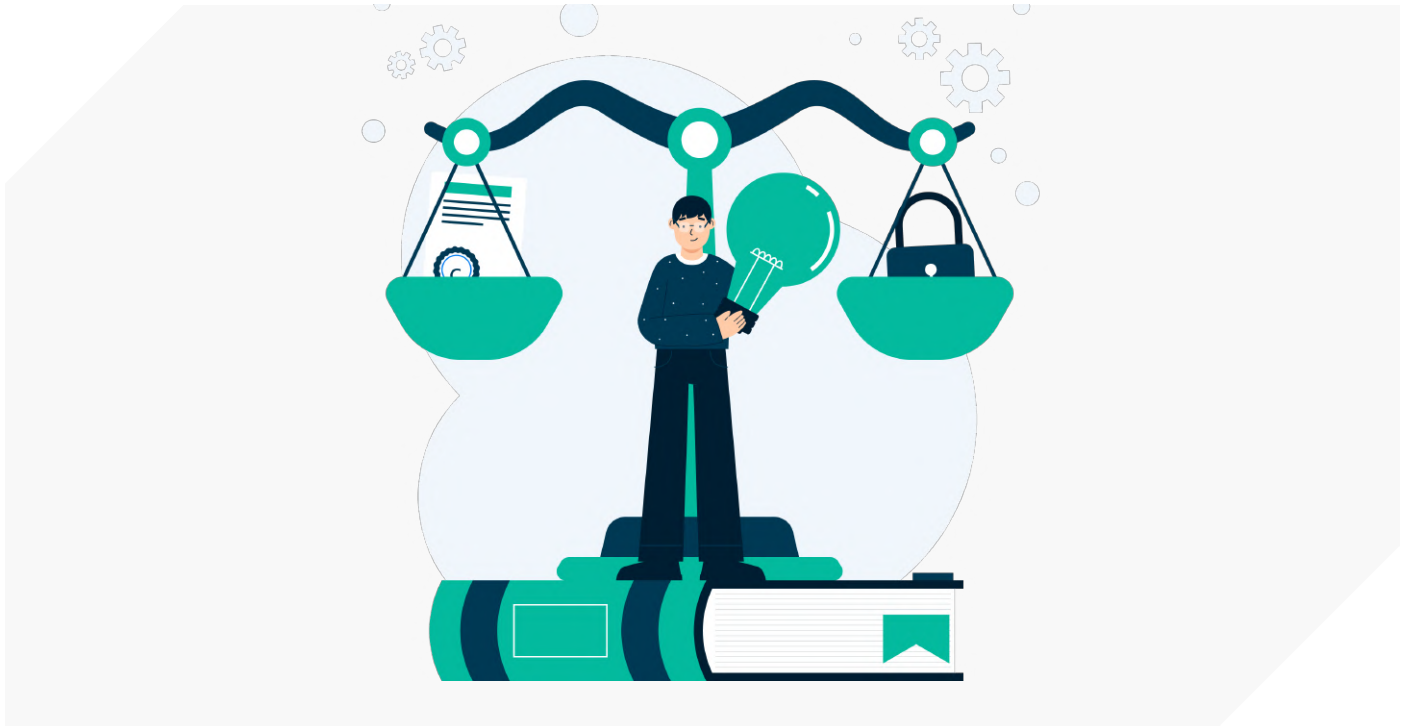
Cultural differences in communication styles also pose a challenge. Different cultures have distinct communication norms and preferences. Directness or indirectness, the use of nonverbal cues, and the degree of formality can vary significantly across cultures. For example, with its straightforward communication style, Microsoft may need to adapt when working with construction partners from cultures that value indirect communication. Recognizing and respecting these cultural differences is crucial for effective communication and building strong relationships.

Time zone disparities and logistical challenges add further complexity to international partnerships. Coordinating meetings, collaborative work sessions, and project timelines can become challenging with teams operating in different countries. Microsoft and its construction partners must establish effective communication channels, leverage technology for virtual meetings, and be flexible in accommodating different time zones. Additionally, logistical challenges, such as coordinating site visits, shipping equipment, and managing cross-border logistics, require careful planning and coordination.

• Legal and regulatory complexities

International partnerships between Microsoft and the construction industry are subject to legal and regulatory complexities that must be navigated effectively.

One significant challenge is dealing with different legal systems and frameworks. Each country has its legal landscape, contract laws, and construction project regulations. Microsoft and its construction partners must invest time and resources in understanding the legal requirements in each country of operation, ensuring compliance, and crafting contracts that protect the rights and obligations of all parties involved.



Intellectual property (IP) protection and licensing pose another challenge in international partnerships. Microsoft's technological innovations and software solutions are valuable assets that require adequate protection. Collaborating with construction partners means sharing knowledge and technologies and raising concerns about IP rights and ownership. To address this challenge, comprehensive agreements, and contracts should be in place, outlining the terms of IP usage, licensing, and protection.

Furthermore, compliance with international trade and investment regulations adds complexity to international partnerships. Governments impose various trade restrictions, export controls, and foreign investment regulations that must be adhered to. Microsoft and its construction partners must navigate these regulations, obtain necessary permits and licenses, and ensure that their collaborative activities comply with the legal frameworks of the countries involved.

• Risk management and conflict resolution

International partnerships between Microsoft and the construction industry carry inherent risks and potential conflicts that must be effectively managed. One challenge is managing differing expectations and goals.

Each party may have its priorities, timelines, and desired outcomes. It is crucial to align expectations and establish clear project goals. Effective communication, frequent updates, and ongoing collaboration allow for early identification and resolution of discrepancies, ensuring all parties work towards a common vision.

Mitigating political and economic risks is another critical aspect of international partnerships. Political instability, changes in government policies, economic downturns, or currency fluctuations can impact the progress and success of collaborative projects. Microsoft and its construction partners must conduct thorough risk assessments, diversify their operations, and implement contingency plans to minimize the impact of such risks. Developing a deep understanding of the political and economic landscapes in the countries involved is essential for proactive risk management.

Inevitably, conflicts and disputes may arise during international partnerships. Differences in perspectives, cultural misunderstandings, or conflicting interests can lead to tensions. To effectively manage conflicts, proactive strategies should be in place. This includes promoting open dialogue, active listening, and a willingness to understand each other's viewpoints. Mediation and alternative dispute resolution mechanisms can also be employed to resolve conflicts amicably, preserving the partnership and allowing the collaborative efforts to move forward.

Microsoft and its construction partners can overcome the challenges inherent in international partnerships by addressing communication barriers, navigating legal and regulatory complexities, and implementing effective risk management and conflict resolution strategies. The ability to navigate these challenges ensures successful collaborations, strengthens the partnership, fosters mutual trust, and paves the way for long-term success in the global construction landscape.

Strategies for Successful International Partnerships

- Preparing for Partnership



When Microsoft partners with the construction industry internationally, careful preparation is essential to set the foundation for a successful collaboration. This involves several key strategies:

Identifying shared values and goals: Before entering into a partnership, Microsoft and its construction partners should align their values, missions, and long-term goals. This shared vision forms the basis of a strong partnership and ensures that both parties work towards common objectives.

Conducting due diligence and risk assessment: Thorough due diligence is crucial to understand the construction partner's **capabilities**, reputation, and financial stability. A comprehensive risk assessment should also be conducted to identify potential challenges, legal implications, and market risks that may arise during the partnership.

Establishing clear communication channels: Effective communication is vital for successful partnerships. Microsoft and its construction partners should establish clear communication channels, defining the primary points of contact and the preferred methods of communication. Regular communication facilitates efficient collaboration and minimizes misunderstandings.

- **Building trust and relationships**



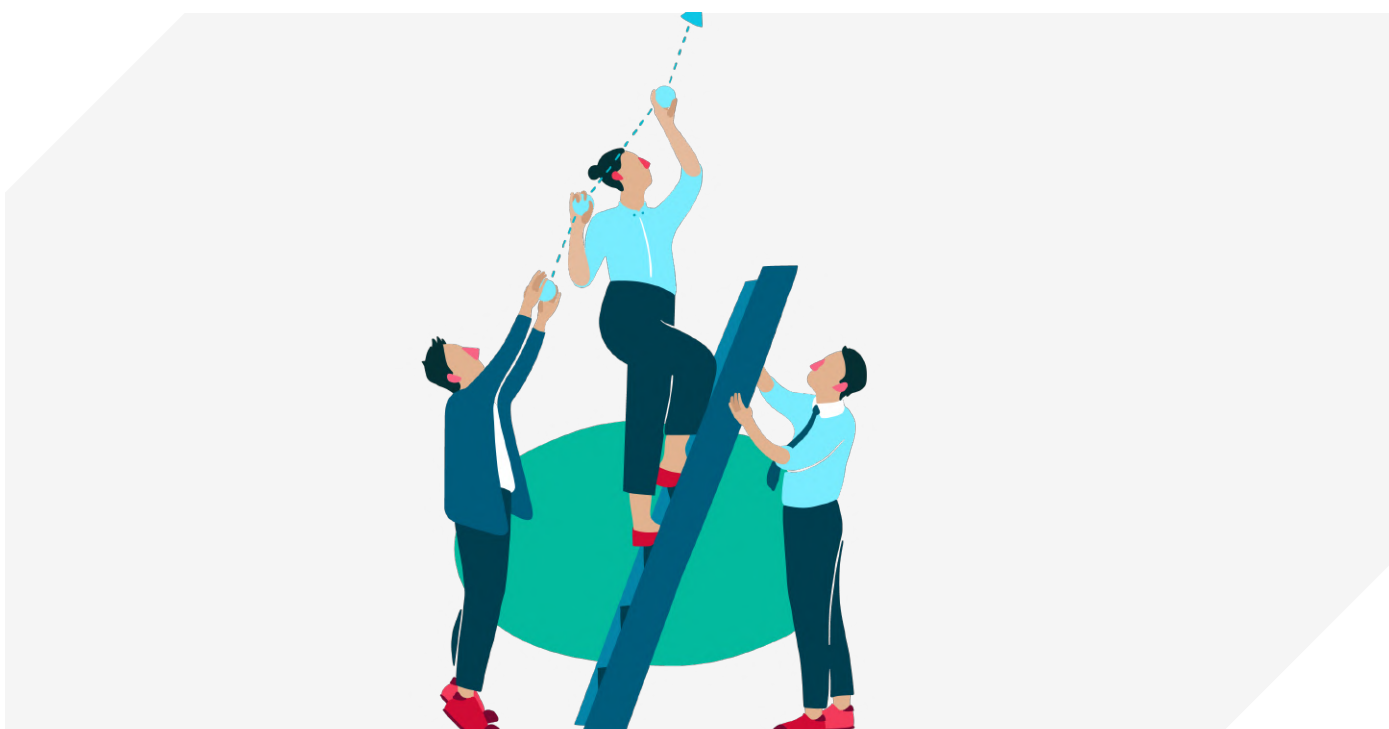
Building trust and strong relationships are foundational elements of successful international partnerships. In the context of Microsoft partnering with the construction industry, the following strategies are crucial:

Cultivating personal connections and rapport: Encouraging personal interactions and building rapport among team members fosters trust and strengthens the partnership. Microsoft representatives should invest time in getting to know their construction partners, understanding their perspectives, and building personal connections beyond formal business transactions.

Establishing mutual respect and understanding: Respecting each other's expertise, experiences, and cultural backgrounds is fundamental to a successful partnership. Microsoft and its construction partners should create an environment of mutual respect, valuing the contributions and perspectives of all team members involved.

Promoting transparency and accountability: Transparency and accountability build trust and confidence between partners. Microsoft and its construction partners should establish clear expectations, deliver on commitments, and communicate openly and honestly. This transparency ensures that challenges and successes are shared openly, allowing for collaborative problem-solving and effective decision-making.

- **Effective collaboration and teamwork**



Successful international partnerships between Microsoft and the construction industry rely on effective collaboration and teamwork. The following strategies contribute to this:

Developing efficient project management structures: Clear project management structures, roles, and responsibilities should be established from the outset. Defined workflows, decision-making processes, and regular progress updates ensure that projects run smoothly and efficiently.

Facilitating knowledge and information sharing: Microsoft and its construction partners should actively promote knowledge and information sharing. This can be achieved through regular meetings, workshops, and collaborative platforms that facilitate the exchange of ideas, best practices, and lessons learned. Open communication and knowledge sharing enhance the collective expertise of the partnership.

Leveraging technology for virtual collaboration: Technology is crucial in international partnerships. Microsoft's suite of collaboration tools, such as cloud-based platforms, video conferencing, and project management software, enables seamless virtual collaboration. Leveraging these technologies promotes real-time communication, document sharing, and effective collaboration despite geographical distances.

- **Adapting to cultural differences**



International partnerships necessitate an understanding and appreciation of cultural differences. When Microsoft partners with the construction industry, the following strategies support cultural adaptation and inclusivity:

Understanding cultural nuances and etiquette: Microsoft should invest in cultural intelligence by learning about its construction partners' cultural norms, values, and practices. This understanding enables respectful and appropriate behavior, avoiding misunderstandings or unintentional offense.

Developing cross-cultural communication skills: Effective cross-cultural communication is vital in international partnerships. Microsoft and its construction partners should invest in cross-cultural training and provide resources to develop the necessary skills for navigating cultural differences.

Resolving cultural conflicts and fostering inclusivity: Inevitably, cultural conflicts may arise. Microsoft and its construction partners should proactively resolve these conflicts, foster inclusivity, and ensure all team members feel valued and heard. Open dialogue, empathy, and a willingness to find common ground are key to overcoming cultural barriers and creating an inclusive partnership.

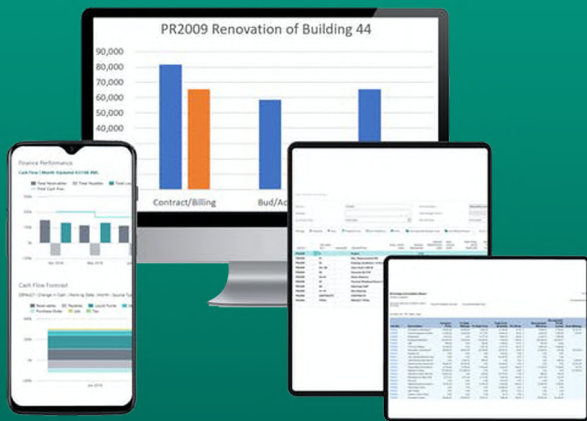
By implementing these strategies for successful international partnerships, Microsoft partners and the construction experts can navigate the complexities of collaboration, foster strong relationships, and achieve mutual success in a globalized construction industry.

The Bottom Line

Throughout this eBook, we have explored the challenges and rewards of international partnerships, particularly in the context of **Microsoft partnering with the construction industry**. We delved into such collaborations' economic advantages, knowledge exchange, and cultural enrichment.

International partnerships between Microsoft partners and the construction industry offer immense growth, innovation, and cultural enrichment potential. By embracing the challenges, fostering strong relationships, and promoting collaboration, Microsoft and its construction partners can unlock new frontiers of success and contribute to a more interconnected and prosperous world. As you embark on your international partnership journeys, may you embrace the opportunities, learn from the diversity, and create a positive impact on the global stage.

If you're inspired to merge hands with the construction industry, **ProjectPro** can be your go-to all-in-one construction accounting software. Know more today - <https://www.projectpro365.com/partner-program>



✉ sales@projectpro365.com

🌐 www.projectpro365.com

📞 1-647-696-4534



About ProjectPro

ProjectPro is a division of Netsmartz LLC global group of companies. ProjectPro is specifically designed for construction firms and powered by Microsoft Dynamics 365 Business Central to make sure you get the most out of your business software.

Stand out of the league by streamlining your business processes, controlling costs, and offering timely and accurate information. ProjectPro holds the potential to integrate your crucial job quoting, project accounting, resource management for labor and equipment, and much more all in a single database.

With integrated data, intelligent transaction processing, and robust analytical and reporting capabilities, you can reduce the time and effort it takes to access meaningful information necessary to make good business decisions.

[REQUEST A DEMO](#)